



City of
SANTA CLARITA
PUBLIC LIBRARY

STATISTICAL REPORT
Fiscal Year 2018-19
August 2018

SANTA CLARITA PUBLIC LIBRARY STATISTICS
FISCAL YEAR 2018-19

Statistical Summary

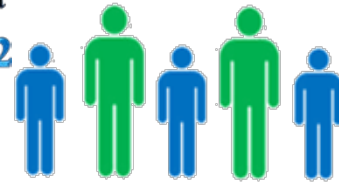
August 2018

Month-to-Date	CANYON COUNTRY		OLD TOWN NEWHALL		VALENCIA		DIGITAL		TOTALS	
	August 2018	August 2017	August 2018	August 2017	August 2018	August 2017	August 2018	August 2017	August 2018	August 2017
Patron Traffic	17,442	15,796	25,427	26,682	18,592	19,787			61,461	62,265
Circulation	23,520	26,768	21,700	23,380	38,753	44,707	12,515	11,709	96,488	106,564
PC Reservations	4,167	4,562	3,807	4,388	3,127	3,298			11,101	12,248
Number of Programs	5	28	16	24	4	16			25	68
Library Cards Issued	400	450	563	712	398	394			1,361	1,556

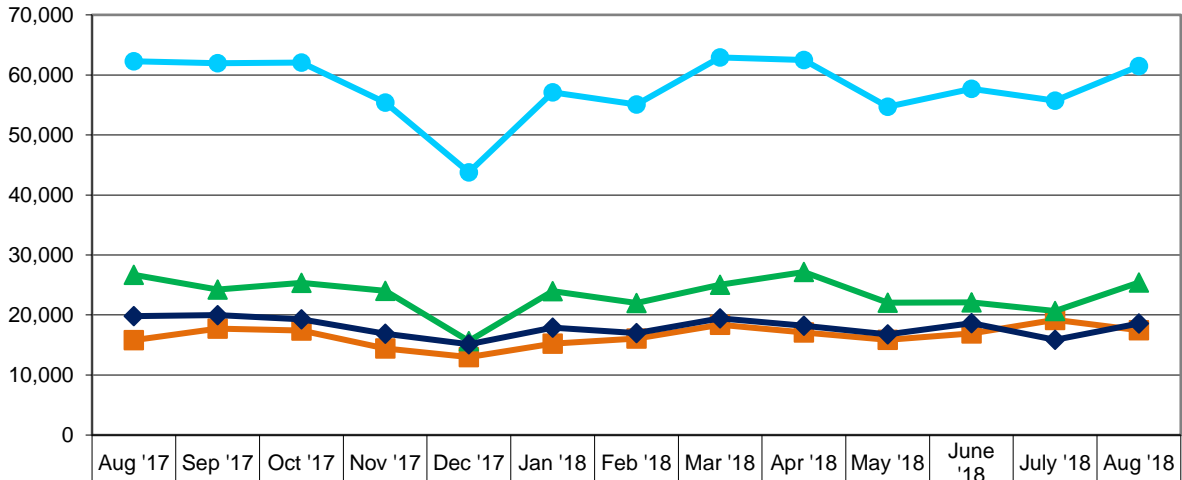
Year-to-Date	CANYON COUNTRY		OLD TOWN NEWHALL		VALENCIA		DIGITAL		TOTALS	
	August Y-T-D 2018	August Y-T-D 2017	August Y-T-D 2018	August Y-T-D 2017	August Y-T-D 2018	August Y-T-D 2017	August Y-T-D 2018	August Y-T-D 2017	August Y-T-D 2018	August Y-T-D 2017
Patron Traffic	36,639	38,698	46,069	50,210	34,451	40,996			117,159	129,904
Circulation	49,527	60,664	42,578	49,840	75,254	93,000	23,329	23,480	190,688	226,984
PC Reservations	7,991	9,039	6,860	8,523	5,643	6,438			20,494	24,000
Number of Programs	48	83	62	86	40	61			150	230
Library Cards Issued	843	996	1,115	1,121	836	746			2,794	2,863

SANTA CLARITA PUBLIC LIBRARY STATISTICS
 FISCAL YEAR 2018-19
 PATRON VISITS

A total of **61,461** patrons visited the Santa Clarita Public Library (SCPL), with **17,442** visitors at Canyon Country, **25,427** at Newhall, and **18,592** at Valencia.

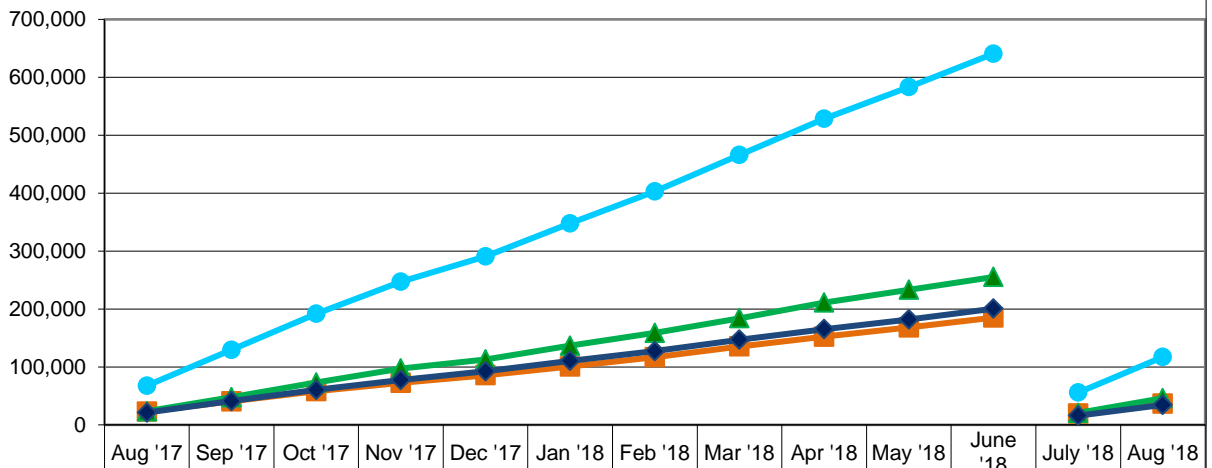


Patron Traffic/Visits - Monthly



Cyn Country	15796	17735	17412	14445	12990	15240	16089	18391	17103	15874	16926	19197	17442
Newhall	26682	24237	25362	24032	15663	23991	22000	25060	27161	22066	22106	20642	25427
Valencia	19787	19989	19306	16906	15129	17881	17001	19457	18205	16779	18665	15859	18592
SCPL	62265	61961	62080	55383	43782	57112	55090	62908	62469	54719	57697	55698	61461

Cumulative Patron Traffic/Visits - YTD



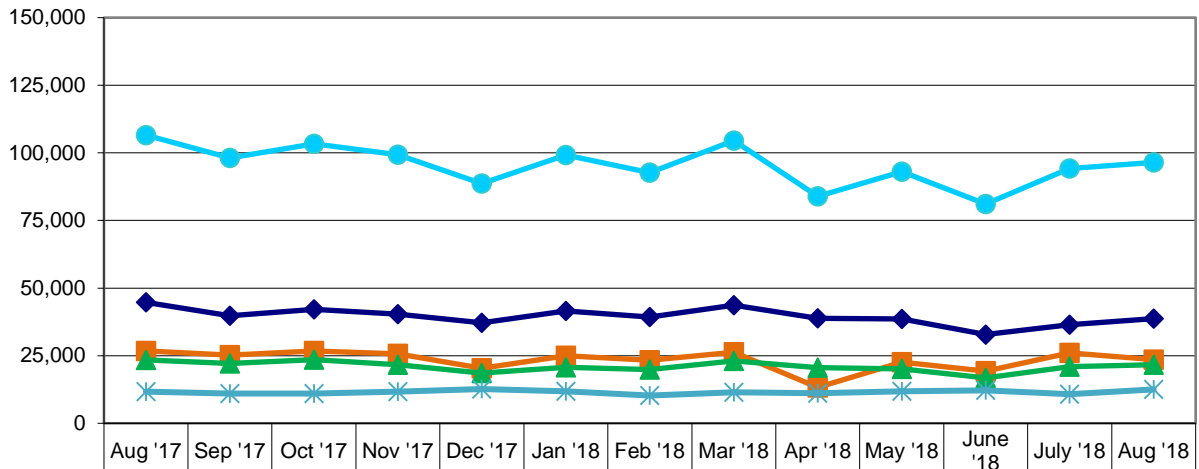
Cyn Country	22902	40637	58049	72494	85484	100724	116813	135204	152307	168181	185107	19197	36639
Newhall	23528	47765	73127	97159	112822	136813	158813	183873	211034	233100	255206	20642	46069
Valencia	21209	41198	60504	77410	92539	110420	127421	146878	165083	181862	200527	15859	34451
SCPL	67639	129600	191680	247063	290845	347957	403047	465955	528424	583143	640840	55698	117159

SANTA CLARITA PUBLIC LIBRARY STATISTICS
 FISCAL YEAR 2018-19
 CIRCULATION

A total of **96,488** books and materials were
 circulated in the SCPL, with
23,520 books and materials at Canyon Country,
21,700 at Newhall, **38,753** at Valencia, and
12,515 at the Digital Library.

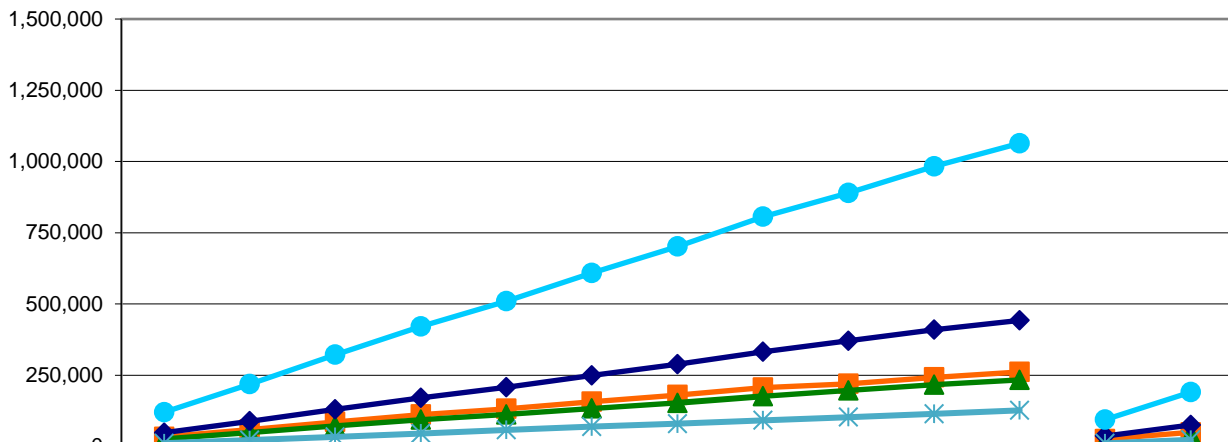


Circulation - Monthly



	Aug '17	Sep '17	Oct '17	Nov '17	Dec '17	Jan '18	Feb '18	Mar '18	Apr '18	May '18	June '18	July '18	Aug '18
Cyn Country	26768	25242	26737	25681	20293	24989	23270	26290	13272	22554	19253	26007	23520
Newhall	23380	22140	23529	21621	18623	20733	19854	23060	20635	20115	16784	20878	21700
Valencia	44707	39786	42096	40298	37135	41589	39283	43642	38846	38559	32829	36501	38753
Digital	11709	10983	11016	11713	12660	11825	10261	11507	11114	11856	12214	10814	12515
SCPL	106564	98151	103378	99313	88711	99136	92668	104499	83867	93084	81080	94200	96488

Cumulative Circulation - YTD



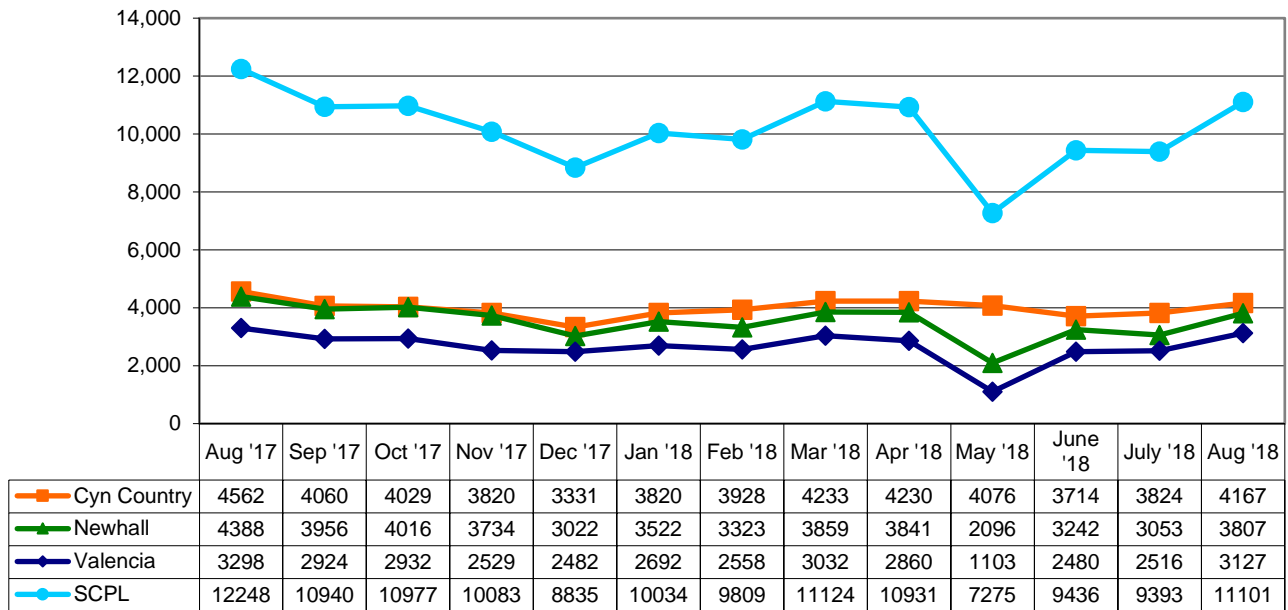
	Aug '17	Sep '17	Oct '17	Nov '17	Dec '17	Jan '18	Feb '18	Mar '18	Apr '18	May '18	June '18	July '18	Aug '18
Cyn Country	33896	59138	85875	111556	131849	156838	180108	206398	219670	242224	261477	26007	49527
Newhall	26460	48600	72129	93750	112373	133106	152960	176020	196655	216770	233554	20878	42578
Valencia	48293	88079	130175	170473	207608	249197	288480	332122	370968	409527	442356	36501	75254
Digital	11502	22485	33501	45214	57874	69699	79960	91467	102581	114437	126651	10814	23329
SCPL	120151	218302	321680	420993	509704	608840	701508	806007	889874	982958	1064038	94200	190688

SANTA CLARITA PUBLIC LIBRARY STATISTICS
 FISCAL YEAR 2018-19
 PUBLIC COMPUTER RESERVATIONS

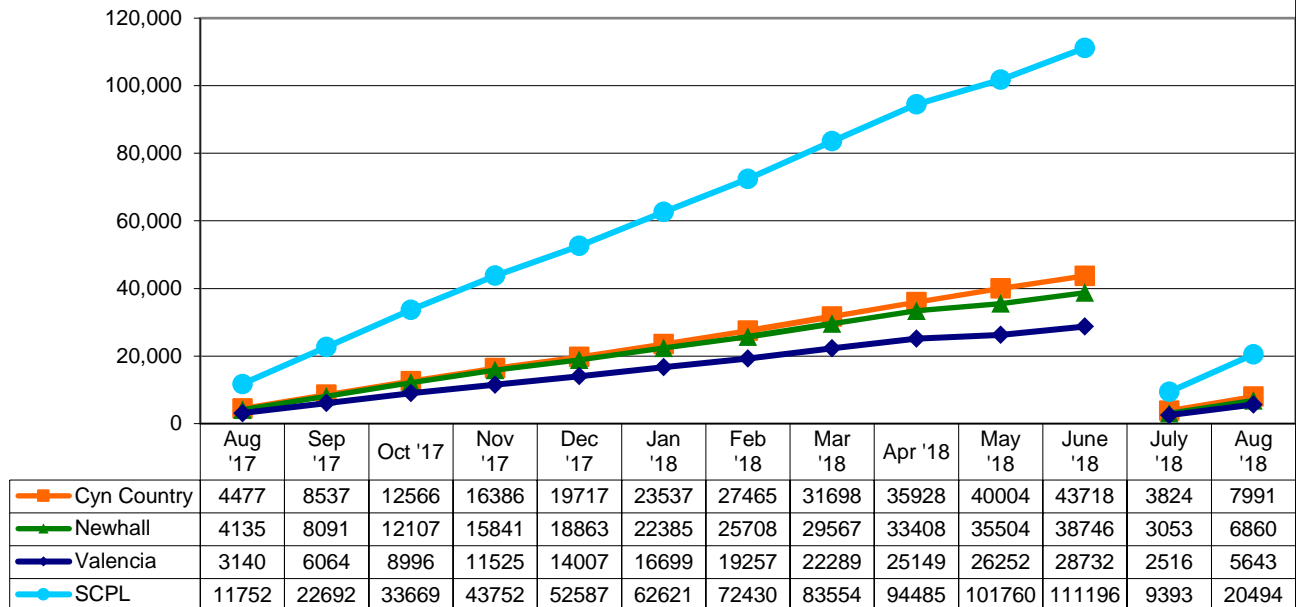


A total of **11,101** patrons reserved and used a public computer in the SCPL. **4,167** patrons used public computers in the Canyon Country Library, **3,807** in Newhall Library, and **3,127** at Valencia Library.

Public Computer Reservations - Monthly



Cumulative Public Computer Reservations - YTD

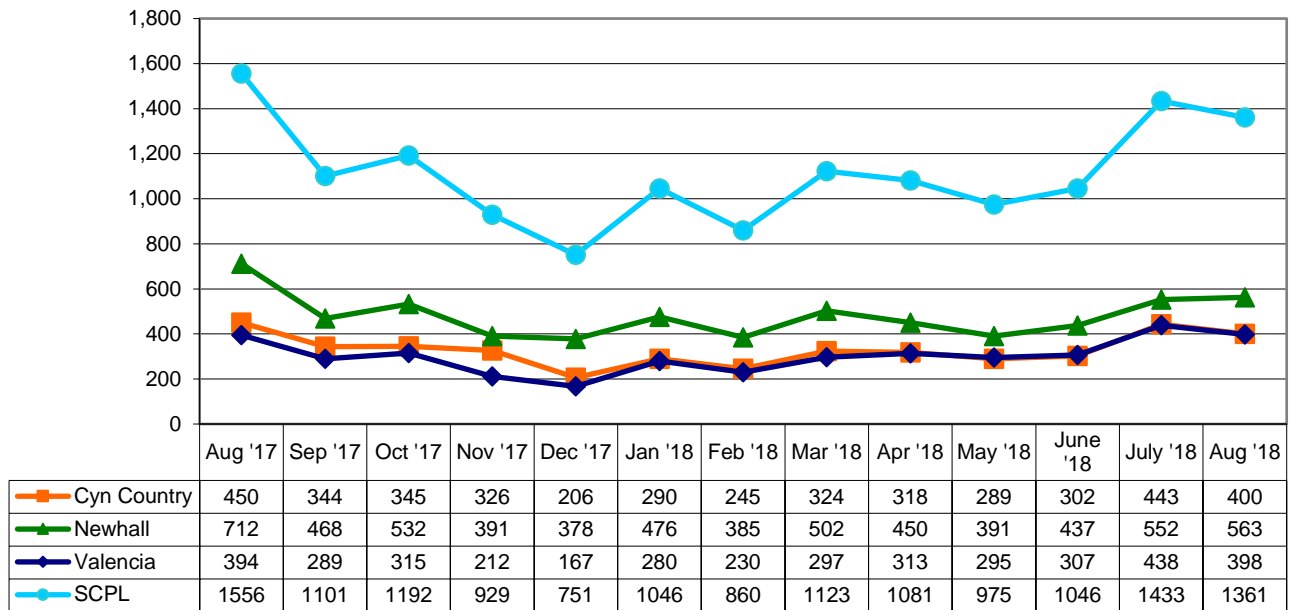


SANTA CLARITA PUBLIC LIBRARY STATISTICS
 FISCAL YEAR 2018-19
 LIBRARY CARDS ISSUED

A total of **1,361** new Library cards were issued at the SCPL. **400** new cards were issued at the Canyon Country Library, **563** at Newhall Library, and **398** at Valencia Library.



Library Cards Issued - Monthly



Cumulative Library Cards Issued - YTD

