



*City of*  
**SANTA CLARITA**  
**PUBLIC LIBRARY**

**STATISTICAL REPORT**  
Fiscal Year 2018-19  
July 2018

SANTA CLARITA PUBLIC LIBRARY STATISTICS  
FISCAL YEAR 2018-19

## Statistical Summary

### July 2018

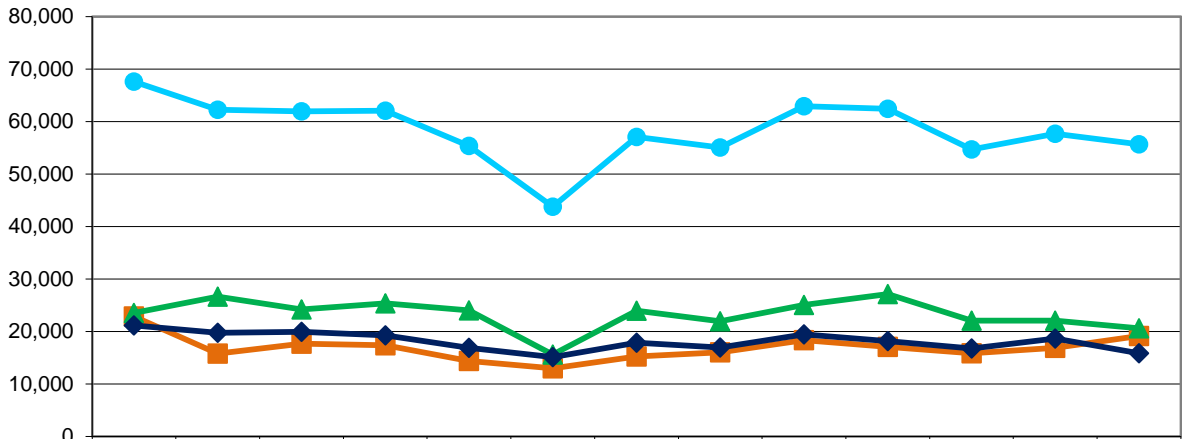
	CANYON COUNTRY		OLD TOWN NEWHALL		VALENCIA		DIGITAL		TOTALS	
	July 2018	July 2017	July 2018	July 2017	July 2018	July 2017	July 2018	July 2017	July 2018	July 2017
Circulation	26,007	33,896	20,878	26,460	36,501	48,293	10,814	11,502	94,200	120,151
Patron Traffic	19,197	22,902	20,642	23,528	15,859	21,209			55,698	67,639
PC Reservations	3,824	4,477	3,053	4,135	2,516	3,140			9,393	11,752
Number of Programs	43	55	46	62	36	45			125	162
Library Cards Issued	443	546	552	409	438	352			1,433	1,307

SANTA CLARITA PUBLIC LIBRARY STATISTICS  
 FISCAL YEAR 2017-18  
 PATRON VISITS

A total of **55,698** patrons visited the Santa Clarita Public Library (SCPL), with **19,197** visitors at Canyon Country, **20,642** at Newhall, and **15,859** at Valencia.

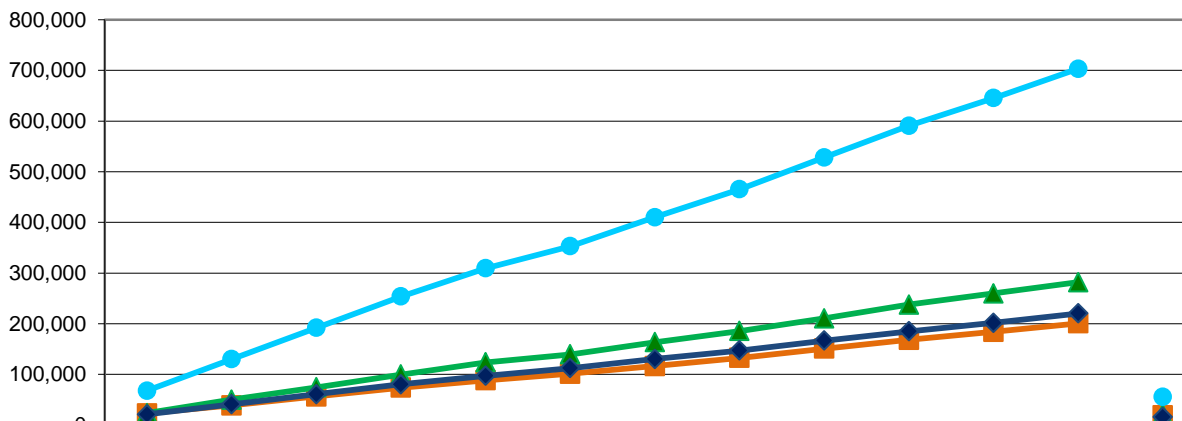


Patron Traffic/Visits - Monthly



	July '17	Aug '17	Sep '17	Oct '17	Nov '17	Dec '17	Jan '18	Feb '18	Mar '18	Apr '18	May '18	June '18	July '18
Cyn Country	22902	15796	17735	17412	14445	12990	15240	16089	18391	17103	15874	16926	19197
Newhall	23528	26682	24237	25362	24032	15663	23991	22000	25060	27161	22066	22106	20642
Valencia	21209	19787	19989	19306	16906	15129	17881	17001	19457	18205	16779	18665	15859
SCPL	67639	62265	61961	62080	55383	43782	57112	55090	62908	62469	54719	57697	55698

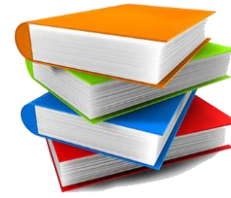
Cumulative Patron Traffic/Visits - YTD



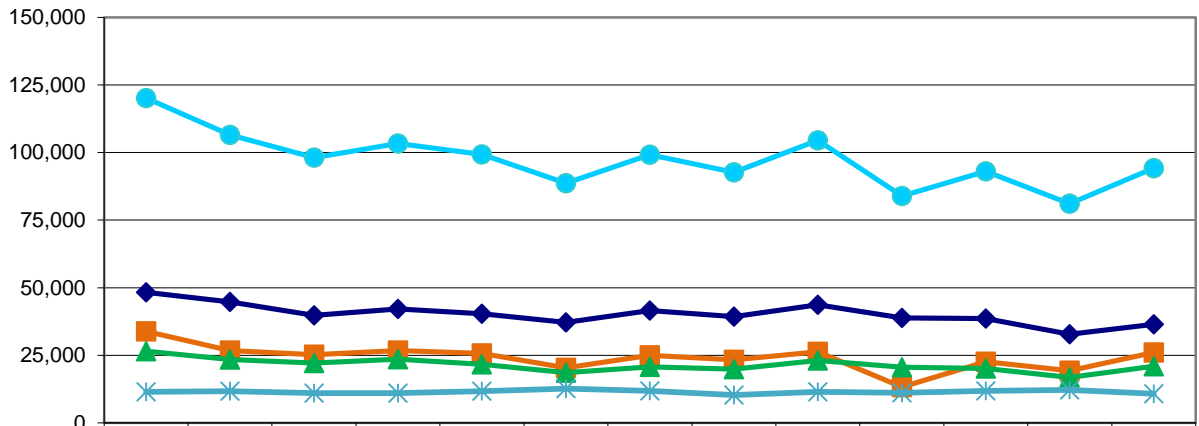
	July '17	Aug '17	Sep '17	Oct '17	Nov '17	Dec '17	Jan '18	Feb '18	Mar '18	Apr '18	May '18	June '18	July '18
Cyn Country	22902	38698	56433	73845	88290	101280	116520	132609	151000	168103	183977	200903	19197
Newhall	23528	50210	74447	99809	123841	139504	163495	185495	210555	237716	259782	281888	20642
Valencia	21209	40996	60985	80291	97197	112326	130207	147208	166665	184870	201649	220314	15859
SCPL	67639	129904	191865	253945	309328	353110	410222	465312	528220	590689	645408	703105	55698

SANTA CLARITA PUBLIC LIBRARY STATISTICS  
 FISCAL YEAR 2017-18  
 CIRCULATION

A total of **94,200** books and materials were  
 circulated in the SCPL, with  
**26,007** books and materials at Canyon Country,  
**20,878** at Newhall, **36,501** at Valencia, and  
**10,814** at the Digital Library.

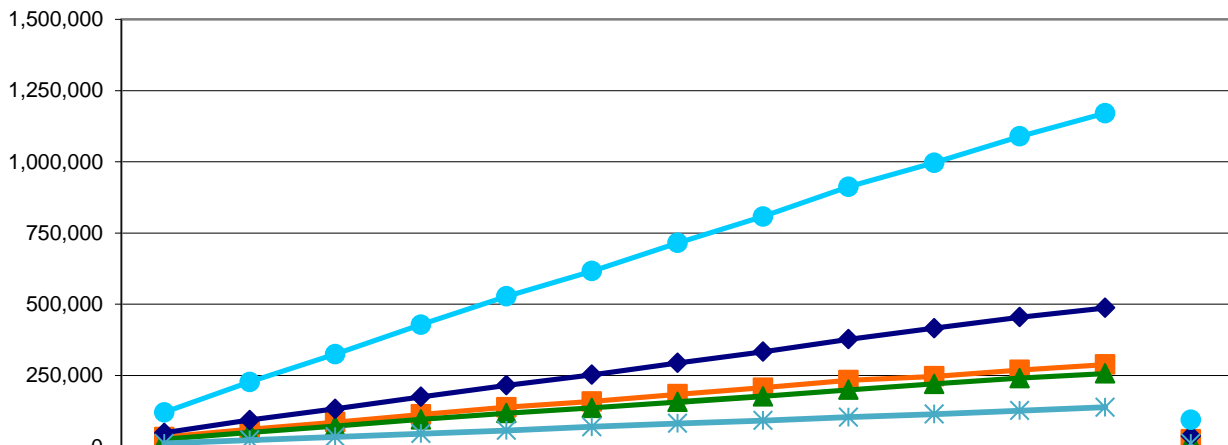


Circulation - Monthly



	July '17	Aug '17	Sep '17	Oct '17	Nov '17	Dec '17	Jan '18	Feb '18	Mar '18	Apr '18	May '18	June '18	July '18
Cyn Country	33896	26768	25242	26737	25681	20293	24989	23270	26290	13272	22554	19253	26007
Newhall	26460	23380	22140	23529	21621	18623	20733	19854	23060	20635	20115	16784	20878
Valencia	48293	44707	39786	42096	40298	37135	41589	39283	43642	38846	38559	32829	36501
Digital	11502	11709	10983	11016	11713	12660	11825	10261	11507	11114	11856	12214	10814
SCPL	120151	106564	98151	103378	99313	88711	99136	92668	104499	83867	93084	81080	94200

Cumulative Circulation - YTD



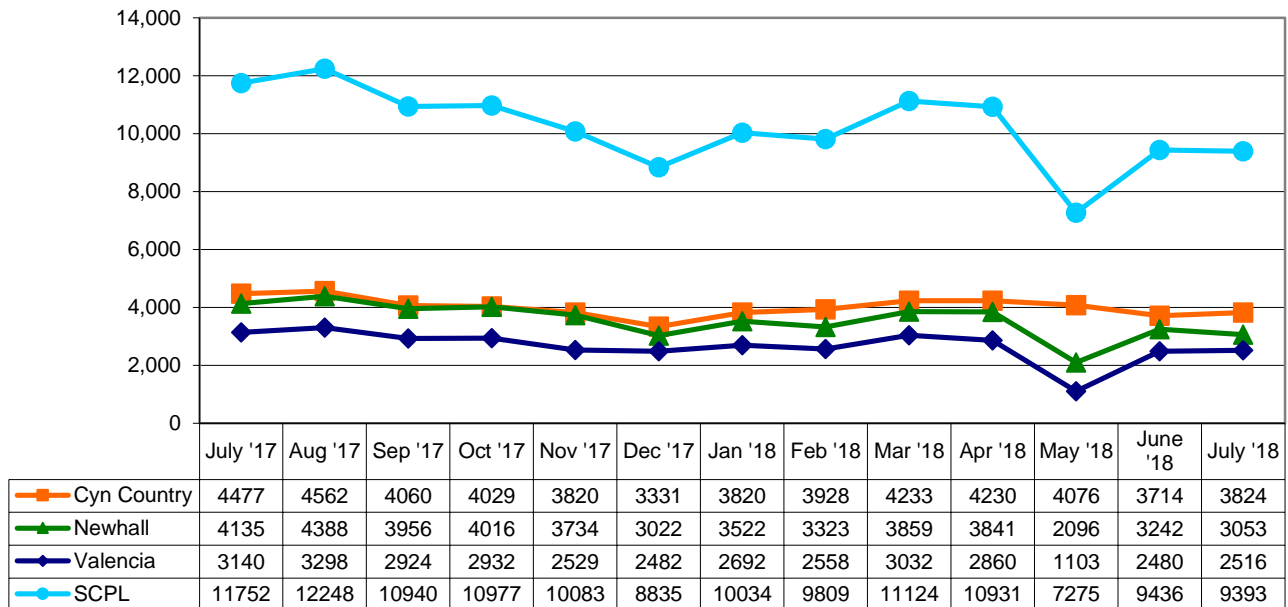
	July '17	Aug '17	Sep '17	Oct '17	Nov '17	Dec '17	Jan '18	Feb '18	Mar '18	Apr '18	May '18	June '18	July '18
Cyn Country	33896	60664	85906	112643	138324	158617	183606	206876	233166	246438	268992	288245	26007
Newhall	26460	49840	71980	95509	117130	135753	156486	176340	199400	220035	240150	256934	20878
Valencia	48293	93000	132786	174882	215180	252315	293904	333187	376829	415675	454234	487063	36501
Digital	11502	23211	34194	45210	56923	69583	81408	91669	103176	114290	126146	138360	10814
SCPL	120151	226715	324866	428244	527557	616268	715404	808072	912571	996438	1089522	1170602	94200

SANTA CLARITA PUBLIC LIBRARY STATISTICS  
 FISCAL YEAR 2017-18  
 PUBLIC COMPUTER RESERVATIONS

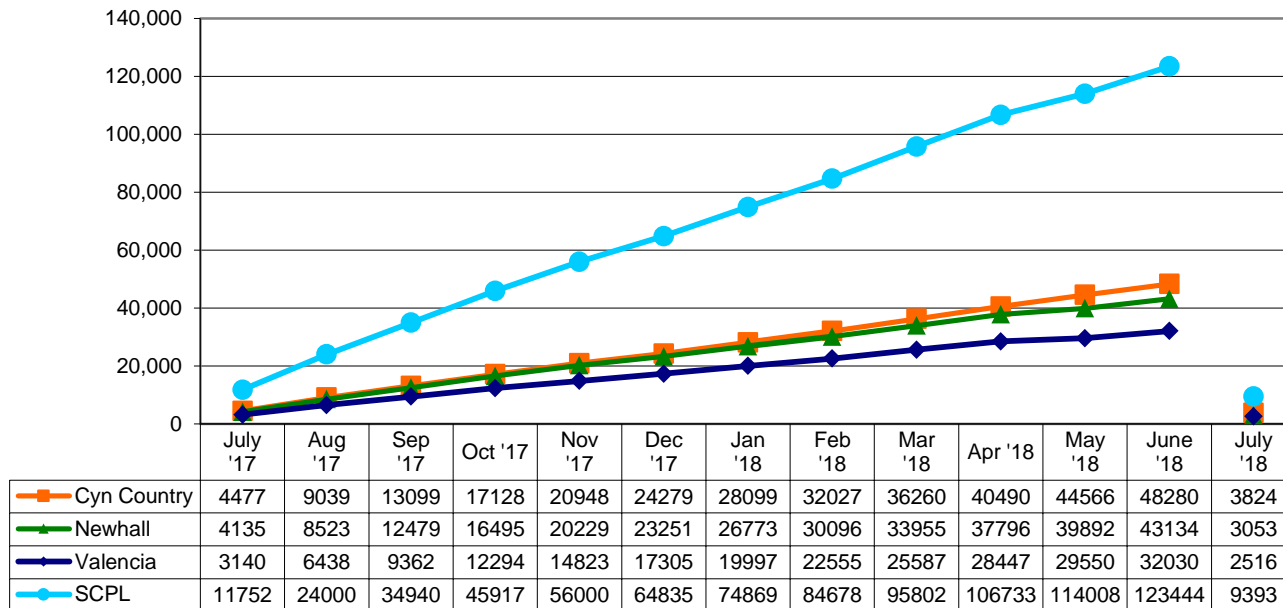


A total of **9,393** patrons reserved and used a public computer in the SCPL. **3,824** patrons used public computers in the Canyon Country Library, **3,053** in Newhall Library, and **2,516** at Valencia Library.

Public Computer Reservations - Monthly



Cumulative Public Computer Reservations - YTD

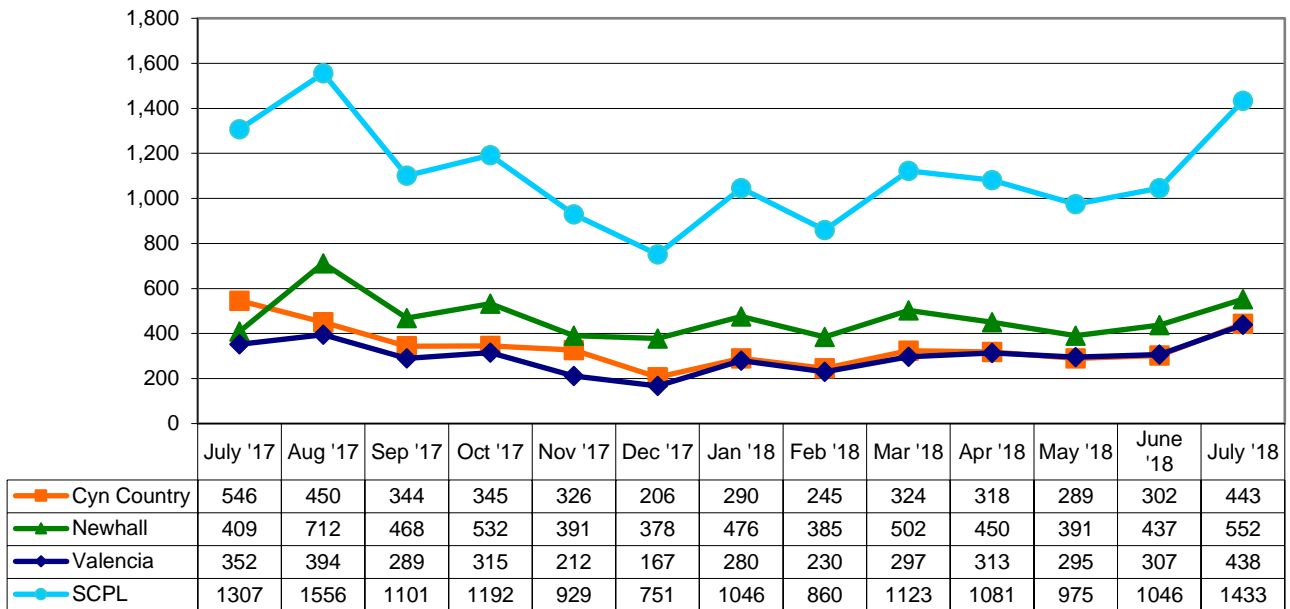


SANTA CLARITA PUBLIC LIBRARY STATISTICS  
 FISCAL YEAR 2017-18  
 LIBRARY CARDS ISSUED

A total of **1,433** new Library cards were issued at the SCPL. **443** new cards were issued at the Canyon Country Library, **552** at Newhall Library, and **438** at Valencia Library.



Library Cards Issued - Monthly



Cumulative Library Cards Issued - YTD

